

ARIZONA TILE

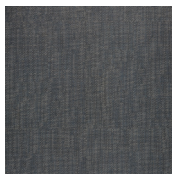
DIGITALART SERIES



DigitalArt Mix Deco & DigitalArt Grey



DigitalArt Bianco



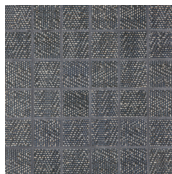
DigitalArt Denim



DigitalArt Ecru



Bianco 2 x 2 Mosaic



Denim 2 x 2 Mosaic



Ecru 2 x 2 Mosaic



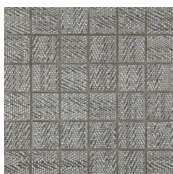
DigitalArt Grey



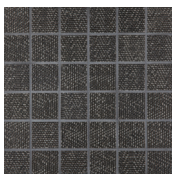
DigitalArt Night



DigitalArt Mix Deco



Grey 2 x 2 Mosaic



Night 2 x 2 Mosaic



Blend Straight Stack

MADE IN ITALY

PRODUCT TYPE

Rectified Glazed Porcelain
Digital Print Technology

STOCKED COLORS

DigitalArt Bianco
DigitalArt Denim
DigitalArt Ecru
DigitalArt Grey
DigitalArt Night
DigitalArt Mix Deco

STOCKED SIZES

12 x 24
24 x 24 Mix Deco
2 x 2 Mosaic Mesh
Blend Straight Stack

STOCKED TRIM

3 x 12 SBN

RECOMMENDED USES

Commercial
Residential
Interior Floor
Interior Wall
Exterior Cladding
Fireplaces
Shower Walls
**Shower Floors
Steam Showers
Pool & Spa
**2 x 2 Mosaic & Blend Straight Stack only

SPECIAL ORDER

Special Order Sizes and Finishes Available:
Please contact your Sales Representative for more details.

DYNAMIC C.O.F. WET: ≥ 0.42

P.E.I. RATING: 4

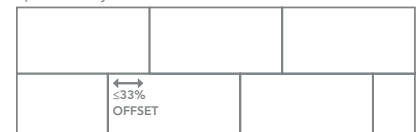
FROSTPROOF: Yes

The DigitalArt Series is a rectified glazed porcelain that gives the appearance of a fabric and has a rich texture. Because this material is a porcelain product, minimal maintenance is required.

Piece to piece variation in shade or color are inherent in all fire clay products; therefore it is recommended to mix tiles from several boxes at a time during installation to achieve the best range of color. When mixing sizes within a series, shade, texture and calibration differences should be expected. This series is suitable for residential and commercial applications.

For proper bonding, LFT/LHT mortar for large format and heavy tiles should be used when installing tiles with a dimensional length greater than 15 inches, and rectangular shape and plank tile, per industry standards. Proper thinset coverage is also necessary, and in some cases, back buttering of tile may be required.

When installing rectangular or square tiles 15 inches or longer with a staggered joint, it is recommended that the offset should not exceed 33%, unless otherwise specified by the manufacturer.



**PRODUCT CONTAINS
≥20% POST-CONSUMER
RECYCLED CONTENT**

For packaging information, please contact your local Arizona Tile.

DCOF rating is a measurement of a tile's frictional resistance. It is the specifier's responsibility to ensure the chosen tile is appropriate for each interior and exterior application.

Please view actual material when making your selection, as the images on this page are only representative.

Revised 05/01/24

www.arizonatile.com