

ARIZONA TILE

SALEM GREY



12 × 24 × 3/8



12 × 24 × 1-1/4 Pool Coping



18 × 36 × 3/8

PRODUCT TYPE

Limestone

ORIGIN

Turkey

STOCKED FINISHES

Renaissance

(Sandblasted & Brushed)

RECOMMENDED USES

Commercial

Residential

Interior Floor

Exterior Floor

Interior Wall

Exterior Cladding

Fireplaces

Shower Walls

STOCKED SIZES

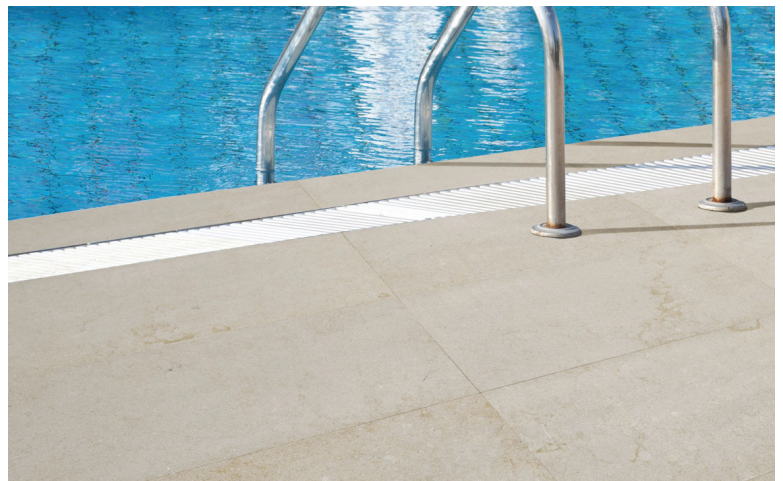
12 × 24 × 3/8 Renaissance

12 × 24 × 1-1/4 Renaissance Pool Coping

18 × 36 × 3/8 Renaissance

Salem Grey is quarried near Afyon, Turkey. It is dense, which makes it suitable for Interior and Exterior applications. This is a sedimentary stone that is formed in shallow seas and is composed mainly of calcite calcium carbonate. It is a common characteristic for this stone to have pits/voids. This does not affect the durability, maintenance or beauty of the stone. One of the unique characteristics of this limestone is the existence of some small shells and fossils that may appear throughout the tile. There can be noticeable variations between pieces, so it is important and recommended that a range of this product be viewed before finalizing a purchase.

Piece to piece variation in shade or color are inherent in all natural stone products; therefore, when installing natural stone tile, it is recommended to mix tiles from several boxes at a time during installation to achieve the best range of color. As a natural stone product it is recommended that it be sealed to extend its longevity.



SIZE	PIECES/BOX	SF/BOX	UNITS/PALLET	SF/PALLET
12 × 24 × 3/8 Renaissance	10	20	180	360
12 × 24 × 1-1/4 Renaissance Pool Coping	N/A	N/A	68	136
18 × 36 × 3/8 Renaissance	N/A	N/A	78	351

Product selection varies at each location. Please contact your local Arizona Tile for product availability.
Please view actual stone when making your selection, as the images on this page are only representative.
Revised 11/12/24

www.arizonatile.com