

# ARIZONA TILE

# FRAGMENT SERIES



Fragment Sand (floor) & Fragment White (wall)



## PRODUCT TYPE

Color Body Porcelain  
Digital Print Technology

## STOCKED COLORS

Fragment Black  
Fragment Gray  
Fragment Ivory  
Fragment Sand  
Fragment White

## RECOMMENDED USES

Commercial  
Residential  
Interior Floor  
Interior Wall  
Exterior Cladding  
Fireplaces  
Shower Walls  
\*Shower Floors  
Steam Showers  
Pool & Spa  
\* 2 x 2 Mosaic Mesh Only

## STOCKED SIZES

12 x 24  
2 x 2 Mosaic Mesh

**DYNAMIC C.O.F. WET:** ≥0.42

**P.E.I. RATING:** 4

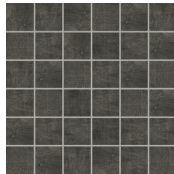
**FROSTPROOF:** Yes

## STOCKED TRIM

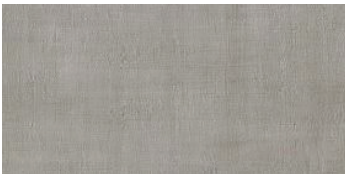
3 x 12 SBN



Fragment Black



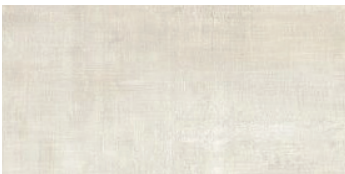
2 x 2 Mosaic Mesh



Fragment Gray



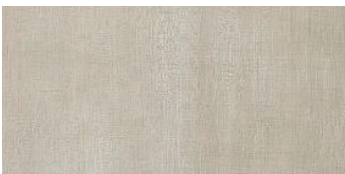
2 x 2 Mosaic Mesh



Fragment Ivory



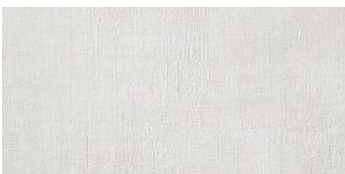
2 x 2 Mosaic Mesh



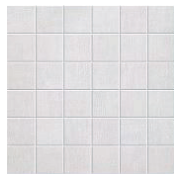
Fragment Sand



2 x 2 Mosaic Mesh



Fragment White



2 x 2 Mosaic Mesh

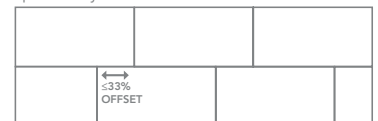
The Fragment series is an American-made color body porcelain tile. Using digital print technology, the concept of blending a linen with concrete provides a textural concrete look porcelain surface. Because this material is a porcelain product, minimal maintenance is required. This series is suitable for residential and commercial applications.

There can be noticeable variances between pieces, so it is important and recommended that a range of this product be viewed before finalizing a purchase.

Piece to piece variation in shade or color are inherent in all fired clay products; therefore, it is recommended to mix tiles from several boxes at a time during installation to achieve the best range of color.

For proper bonding, LFT/LHT mortar for large format and heavy tiles should be used when installing tiles with a dimensional length greater than 15 inches, and rectangular shape and plank tile, per industry standards. Proper thinset coverage is also necessary, and in some cases, back buttering of tile may be required.

When installing rectangular or square tiles 15 inches or longer with a staggered joint, it is recommended that the offset should not exceed 33%, unless otherwise specified by the manufacturer.



For packaging information, please contact your local Arizona Tile.

*DCOF rating is a measurement of a tile's frictional resistance. It is the specifier's responsibility to ensure the chosen tile is appropriate for each interior and exterior application.*

Please view actual material when making your selection, as the images on this page are only representative.

Revised 05/01/24

www.arizonatile.com