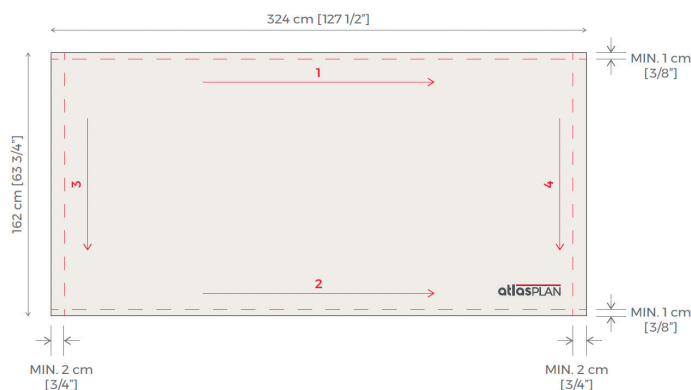
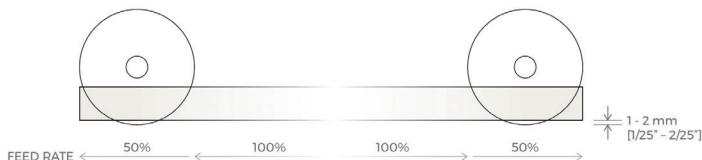


DELLA TERRA™ PORCELAIN SLABS

Key Recommendations for Correct Fabrication

Avoid and Limit Vibrations

Cut the slab on a flat surface, preferably with a foam backer to reduce vibration. Begin the cut with the saw's feed rate at 50%, increase to 100% through the middle of the slab, then exit the slab at 50% speed. The blade height should be set so that the blade only just penetrates the bottom of the slab as shown in the diagram.



Execute Detensioning Cuts

Make the required detensioning cuts in the following order:

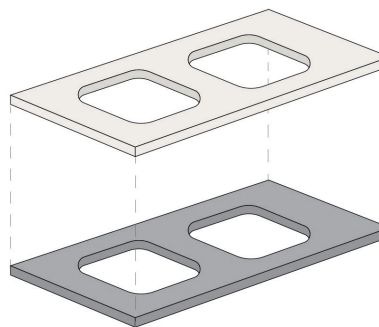
1. Cut both long sides first with each cut being made in the same direction.
2. Next, cut both short sides, again each each cut being made in the same direction.

Be sure to remove at least 3/8" off each side.

Use Correct Substrate

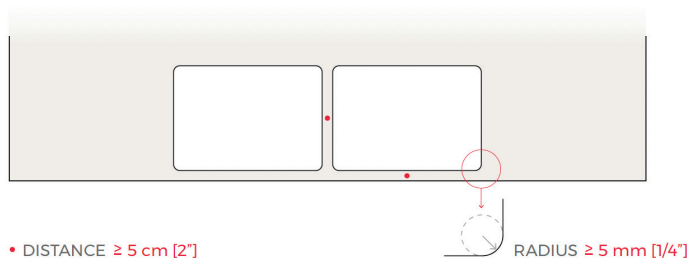
Use only manufacturer-approved backer boards or materials, such as foam board or SAFEBOARD™, as reinforcement for porcelain tops. Since porcelain does not experience thermal expansion, ensure the substrate used shares this property. Avoid materials like quartz or plywood, which do not meet these requirements.

FULL SUPPORT



Correct Radius for Inside Corners

All inside corners must have a minimum 1/4" radius. All internal cutouts (sinks, faucets, etc.) can be made no closer than 2" from the edge of the slab. Do NOT cut sharp, inside corners as doing so will likely result in the slab breaking at the corner due to the accumulation of tension.



Please refer to our full Technical Manual for Comprehensive Fabrication Instructions

DANGER! Porcelain Slabs Contain Respirable Crystalline Silica

Use the QR Code to View Safety Data Sheets (SDS) and Silica Safety Standards & Resources

www.arizonatile.com/resources/product-information/safety-resources

