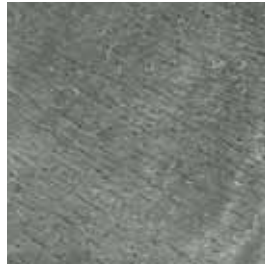


# GOLDEN GREEN QUARTZITE


**STONE TYPE**

Quartzite

**FINISH**

Honed

**ORIGIN**

Rajasthan, India

**SIZES**

12"x12"

16"x16"

**RECOMMENDED USES**

Commercial (vertical application)

Residential

Interior &amp; Exterior

Floor &amp; Wall

Backsplashes

Fireplaces

Tub Surrounds &amp; Showers

Steam Showers

Golden Green quartzite is quarried in Rajasthan, India, in small irregular pieces cleft on both sides of the stone. These flagstone-size pieces are transported to the factory where they are cut into twelve or sixteen inch squares. A gauging machine using multiple saw blades is used on both the top and bottom of the tile in order to get a smoother, flatter surface. Tiles are then honed, which will bring out the rich green, light grey and gold tones that are prominent in this quartzite. Quartzite is a metamorphic stone which evolved from a sandstone due to intense heat and pressure. Because it has evolved from a sandstone, it is also classified as a sedimentary stone. Golden Green lacks iron minerals that have the potential for rusting and is much denser than others, making it one of the few quartzite products that is suitable for wet area applications. It is also a softer stone, and may be susceptible to scratching or abrasion. Arizona Tile offers Golden Green as a product in our tumbled program, which will offer a multitude of mosaics and tile sizes that will visually add a more unique style to any design. There will be noticeable variations in color and movement between pieces. Therefore, it is important and recommended that a range of this product be viewed before finalizing a purchase. As a natural stone product it is recommended that it be sealed to extend its longevity.

SIZE	PIECES/BOX	SF/BOX	UNITS/CRATE	SF/CRATE
12"x12"	10	10	36 boxes	360
16"x16"	6	10.68	20 boxes	213.6

Standard packaging quantities are noted above, but variances may occur.

Please view actual stone when making your selection, as the images on this page are only representative.