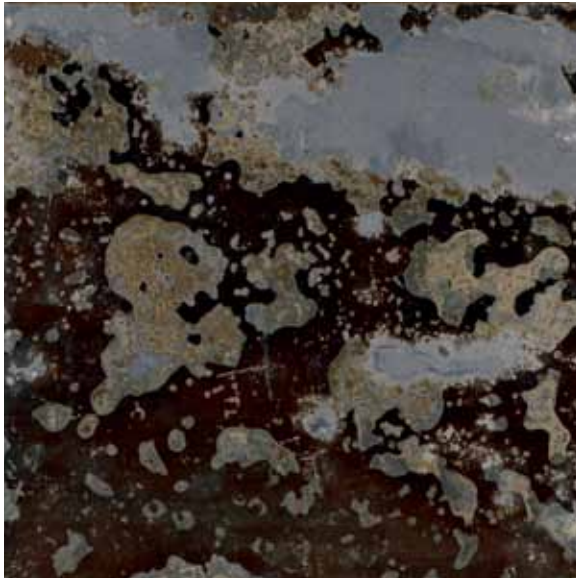


## BRAZILIAN RUST



### STONE TYPE

Slate

### FINISH

Back Ground &  
Natural Cleft

### ORIGIN

Brazil

### SIZES

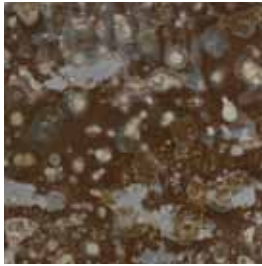
12"x12"

16"x16"

### RECOMMENDED USES

Commercial  
Residential  
Interior  
Exterior (covered environment)  
Floor & Wall  
Backsplashes  
Fireplaces

\*not recommended in areas  
that experience frequent wet  
conditions



Brazilian Rust is quarried from a pit quarry in Brazil. Millions of years ago, silt and mud from a river deposited soil at the mouth of a larger body of water, giving this stone its random color variation. Water has penetrated deep into this stone through small cracks and fissures, causing the iron oxide and other minerals to oxidize. It is this process that produces the deep burgundy and gold portions of Brazilian Rust that only exist on the surface of the stone. Even though the rust colors do not bleed all the way through the grey body of the material, this will not pose any risk to the beauty or application of the material. Brazilian slate products formed under intense amounts of pressure, making them much more dense than other slate materials currently in the market. Arizona Tile does not recommend that Brazilian Rust be installed in or near wet areas, such as showers or next to a swimming pool, because this stone has the potential to oxidize and rust. There will be noticeable variations in color and movement between pieces. Therefore, it is important and recommended that a range of this product be viewed before finalizing a purchase. As a natural stone product it is recommended that it be sealed to extend its longevity.

SIZE	PIECES/BOX	SF/BOX	UNITS/CRATE	SF/CRATE
12"x12"	N/A	N/A	650 pieces	650
16"x16"	N/A	N/A	425 pieces	756.5

Standard packaging quantities are noted above, but variances may occur.

Please view actual stone when making your selection, as the images on this page are only representative.