

# ARIZONA TILE

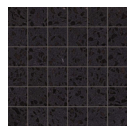
# TERRAZZO SERIES



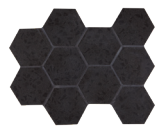
Terrazzo Black



Terrazzo Black



2 x 2 Mosaic



4 Inch Hex Mesh



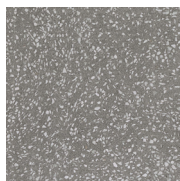
Terrazzo Cream



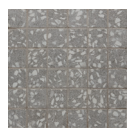
2 x 2 Mosaic



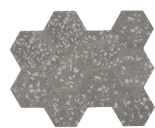
4 Inch Hex Mesh



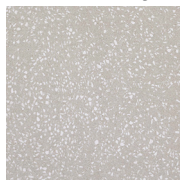
Terrazzo Grey



2 x 2 Mosaic



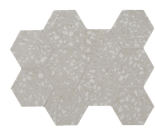
4 Inch Hex Mesh



Terrazzo Pearl



2 x 2 Mosaic



4 Inch Hex Mesh



Terrazzo White



2 x 2 Mosaic



4 Inch Hex Mesh

## MADE IN ITALY

### PRODUCT TYPE

Rectified Color Body Porcelain  
Digital Print Technology

### STOCKED COLORS

Terrazzo Black  
Terrazzo Cream  
Terrazzo Grey  
Terrazzo Pearl  
Terrazzo White

### STOCKED SIZES

24 x 24 x 10mm  
2 x 2 x 10mm Mosaic Mesh  
4 Inch Hex Mesh

### STOCKED TRIM

3 x 24 x 10mm SBN

### RECOMMENDED USES

Commercial  
Residential  
Interior Floor  
Countertops  
Interior Wall  
Exterior Cladding  
Fireplaces  
Showers  
\*Shower Floors  
Steam Showers  
Pool & Spa (waterline)  
\* 2 x 2 x 10mm Mosaic and 4 Inch Hex Only

### SPECIAL ORDER SIZE

24 x 24 x 10mm Polished  
\*Special Order Item:  
Please contact your sales representative or any  
Arizona Tile location for more details

**DYNAMIC C.O.F. WET:** ≥ 0.42

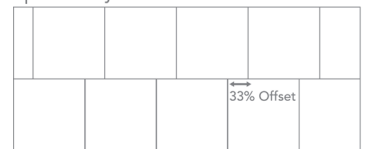
**P.E.I. RATING:** 4

**FROSTPROOF:** Yes

Terrazzo is a porcelain product with a flecked pattern that is offered in a variety of neutral colors. Contributing to the resurgence of mid-century design, Terrazzo adds a clean and modern appeal reminiscent of classic modern architecture. Terrazzo pairs well with a variety of natural materials, creating installations that are contemporary and unique.

Piece to piece variation in shade or color are inherent in all fired clay products; therefore, it is recommended to mix tiles from several boxes at a time during installation to achieve the best range of color. When mixing sizes within a series, shade, texture and calibration differences should be expected. This series is suitable for residential and commercial applications. Because this material is a porcelain product, minimal maintenance is required. For proper bonding, LFT/LHT mortar for large format and heavy tiles should be used when installing tiles with a dimensional length greater than 15", and rectangular shape and plank tile, per industry standards. Proper thinset coverage is also necessary, and in some cases, back buttering of tile may be required.

When installing rectangular or square tiles 15 inches or longer with a staggered joint, industry standard is that the offset should not exceed 33%, unless otherwise specified by the manufacturer.



| SIZE                     | SF/PIECE | PIECES/BOX | SF/BOX  | BOXES/PALLET | SF/PALLET |
|--------------------------|----------|------------|---------|--------------|-----------|
| 24 x 24 x 10mm           | 3.8736   | 3          | 11.6208 | 40           | 464.8320  |
| 2 x 2 x 10mm Mosaic Mesh | 0.9588   | 10 sheets  | 9.588   | 45           | 431.46    |
| 4 Inch Hex Mesh          | 0.86     | 10 sheets  | 8.6     | 45           | 387       |
| 3 x 24 x 10mm SBN        | N/A      | 30         | N/A     | N/A          | N/A       |
| 24 x 24 x 10mm Polished  | 3.8736   | 3          | 11.6208 | 40           | 464.832   |

DCOF rating is a measurement of a tile's frictional resistance. It is the specifier's responsibility to ensure the chosen tile is appropriate for each interior and exterior application.

Standard packaging quantities are noted above, but variances may occur.

Please view actual material when making your selection, as the images on this page are only representative.