



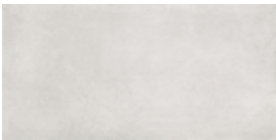
Cemento Rasato Bianco



Cemento Rasato Antracite



Cemento Rasato Beige



Cemento Rasato Bianco



Cemento Rasato Grigio



Cemento Rasato Antracite
2 x 2 Mosaic



Cemento Rasato Beige
2 x 2 Mosaic



Cemento Rasato
Bianco 2 x 2 Mosaic



Cemento Rasato
Grigio 2 x 2 Mosaic

MADE IN ITALY

PRODUCT TYPE

Color Body Porcelain
Digital Print Technology

COLORS

Cemento Rasato Antracite
Cemento Rasato Beige
Cemento Rasato Bianco
Cemento Rasato Grigio

STOCKED SIZES

12 x 24 x 9.4mm
2 x 2 x 9.4mm Mosaic

SPECIAL ORDER SIZES

24 x 24 x 9.4mm
29-3/4 x 29-3/4 x 9.4mm
24 x 48 x 9.4mm

Special Order: Please contact your Sales Representative or any Arizona Tile location for more details.

RECOMMENDED USES

Commercial
Residential
Interior Floor
Countertops
Interior Wall
Exterior Cladding
Fireplaces
Showers
*Shower Floors
Steam Showers
Pool & Spa (waterline)

*2 x 2 Mosaic only

STOCKED TRIM

3 x 12 x 9.4mm SBN

SPECIAL ORDER TRIM

6 x 12 Cove Base
1 x 6 Cove In
1 x 6 Cove Out

P.E.I. RATING: 4

FROSTPROOF: Yes

DYNAMIC C.O.F. WET: ≥ 0.42

The Cemento Rasato Series is a color body porcelain that emulates a concrete appearance. It provides a clean, modern look to any environment.

When mixing sizes within a series, shade, texture and calibration differences should be expected. Because this material is a porcelain product, minimal maintenance is required. This series is suitable for residential and commercial applications.

For proper bonding, LHT/LFT mortar for large format and heavy tiles should be used when installing tiles with a dimensional length greater than 15", and rectangular shape and plank tile, per industry standards. Proper thinset coverage is also necessary, and in some cases, back buttering of the tile may be required.

When installing rectangular or square tiles 15 inches or longer with a staggered joint, it is recommended that the offset should not exceed 33%, unless otherwise specified by the manufacturer.



SIZE	SF/PIECE	PIECES/BOX	SF/BOX	BOXES/PALLET	SF/PALLET
12 x 24 x 9.4mm	1.9368	6	11.6208	48	557.7984
2 x 2 x 9.4mm Mosaic	0.9588	10	9.588	45	431.46
3 x 12 x 9.4mm SBN	N/A	30	N/A	N/A	N/A
24 x 24 x 9.4mm	3.8736	4	15.4944	30	464.832
29-3/4 x 29-3/4 x 9.4mm	6.1332	2	12.2664	45	551.988
24 x 48 x 9.4mm	7.7472	2	15.4944	24	371.8656
6 x 12 x 9.4mm Cove Base	N/A	12	N/A	68	816
1 x 6 x 9.4mm Cove In	N/A	10	N/A	N/A	N/A
1 x 6 x 9.4mm Cove Out	N/A	10	N/A	N/A	N/A

DCOF rating is a measurement of a tile's frictional resistance. It is the specifier's responsibility to ensure the chosen tile is appropriate for each interior and exterior application.

Standard packaging quantities are noted above, but variances may occur.

Please view actual material when making your selection, as the images on this page are only representative.