



Cementine Evo 3



Cementine Evo 1



Cementine Evo 1



Cementine Evo 2



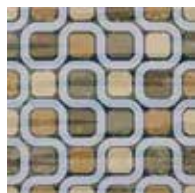
Cementine Evo 2



Cementine Evo 3



Cementine Evo 3



Cementine Evo 4



Cementine Evo 4



Cementine Evo 5



Cementine Evo 5

MADE IN ITALY

PRODUCT TYPE
Porcelain Decos
Digital Print Technology

COLORS
Cementine Evo 1
Cementine Evo 2
Cementine Evo 3
Cementine Evo 4
Cementine Evo 5

STOCKED SIZE
8 × 8 × 10mm

RECOMMENDED USES

Commercial
Residential
Interior Floor
Countertops
Interior Wall
Exterior Cladding
Fireplaces
Showers
Steam Showers
Pool & Spa (waterline)

P.E.I. RATING: 4
FROSTPROOF: Yes
DYNAMIC C.O.F. WET: ≥ 0.42

**PRODUCT CONTAINS
≥20% PRE-CONSUMER
RECYCLED CONTENT**

The Cementine Evo Series is a porcelain, inspired by the fabrics of the 60's, 70's and 80's. The graphics provide a strong, visual impact, using flat background colors to create simple, essential forms. The tile has the appearance of a stencil, worn by time. It is available in five, designs that allow for great variety in how they can be used. Whether using them as individual accents, creating a group of one design, or mixing multiple designs together, they can be used to create a unique layout.



Cementine Evo 2

SIZE	SF/PIECE	PIECES/BOX	SF/BOX	BOXES/PALLET	PCS/PALLET
8 × 8 × 10mm	0.4304	27	11.6208	68	1,836

DCOF rating is a measurement of a tile's frictional resistance. It is the specifier's responsibility to ensure the chosen tile is appropriate for each interior and exterior application.

Standard packaging quantities are noted above, but variances may occur.

Please view actual material when making your selection, as the images on this page are only representative.