

MARBELLA STONE



STONE TYPE

Limestone

FINISH

Sawn

ORIGIN

Philippines

SIZES

12"x12"x1/2"

16"x16"x1/2"

SPECIALTY

12"x12"x1-1/2" Coping

RECOMMENDED USES

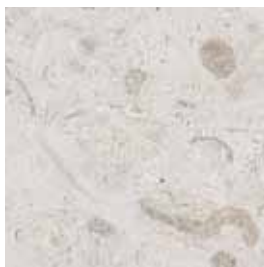
Commercial & Residential

Interior & Exterior

Floor & Wall

Backsplashes

Fireplaces



Marbella Stone is quarried in the Philippines. Unlike other materials, this product will have a sawn finish, which will leave the product with visible saw marks from production, as well as a textured surface. The textured surface makes Marbella Stone ideal for exterior applications, especially around pools and areas with the potential for slipping. It will also be much cooler in temperature than other types of decking, due to the natural pitting in the material. These unfilled pits will dissipate the heat, making it much cooler to touch. This is a sedimentary stone that is formed in shallow seas and is composed mainly of calcite calcium carbonate. One of the unique characteristics of this limestone is the existence of some small shells and fossils that may appear throughout the tile. There will be noticeable variations in color and movement between pieces. Therefore, it is important and recommended that a range of this product be viewed before finalizing a purchase. As a natural stone product it is recommended that it be sealed to extend its longevity.



NSF indicates this product conforms to the requirements of NSF/ANSI Standard 51, thereby meeting the health and sanitation requirements for materials used in areas of food preparation.

SIZE	PIECES/BOX	SF/BOX	UNITS/PALLET	SF/PALLET
12"x12"x1/2"	N/A	N/A	288 pieces	288
16"x16"x1/2"	N/A	N/A	132 pieces	235

Standard packaging quantities are noted above, but variances may occur.

Please view actual stone when making your selection, as the images on this page are only representative.