

## JURA BEIGE



### STONE TYPE

Limestone

### FINISH

Honed

### ORIGIN

Eichstatt, Germany

### SIZES

12" x 12" x 3/8"

18" x 18" x 3/8"

3/4" (2cm slab)

### GEOLOGICAL ERA

Jurassic

(144-206 million years ago)

### RECOMMENDED USES

Commercial & Residential

Interior & Exterior

Floor & Wall

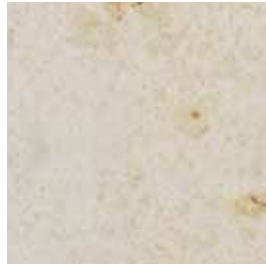
Backsplashes

Countertops

Fireplaces

Tub Surrounds & Showers

Vanities



Jura Beige is quarried from a 25-layer bedrock quarry in Eichstatt, Germany. Each of its layers provides a different tone and structure of this particular limestone. Arizona Tile focuses its inventory on one specific layer, due to its consistency and year-round availability. Jura Beige happens to be a very dense limestone, making it suitable for both commercial and residential applications. One of the unique characteristics of this limestone is the existence of some small shells and fossils that may appear throughout the tile or slabs. Another quality of this material are the quartz veins that can appear throughout the material. These veins are a natural characteristic of the material and are expected to be visible in some pieces of the product. This is a sedimentary stone that is formed in shallow seas and is composed mainly of calcite calcium carbonate. There will be noticeable variations in color and movement between pieces. Therefore, it is important and recommended that a range of this product be viewed before finalizing a purchase. As a natural stone product it is recommended that it be sealed to extend its longevity.



NSF indicates this product conforms to the requirements of NSF/ANSI Standard 51, thereby meeting the health and sanitation requirements for materials used in areas of food preparation.

SIZE	PIECES/BOX	SF/BOX	UNITS/PALLET	SF/PALLET
12" x 12" x 3/8"	10	10	Varies	Varies
18" x 18" x 3/8"	6	13.5	Varies	Varies

Standard packaging quantities are noted above, but variances may occur.

Please view actual stone when making your selection, as the images on this page are only representative.