

# IMPALA BLACK


**STONE TYPE**

Granite

**FINISH**

Polished

**ORIGIN**

Gauteng, South Africa

**SIZES**

12"x12"x3/8"

3/4" (2cm slab)

1-1/4" (3cm slab)

**GEOLOGICAL ERA**

Proterozoic

(544-2500 million years ago)

**RECOMMENDED USES**

Commercial &amp; Residential

Interior &amp; Exterior

Floor &amp; Wall

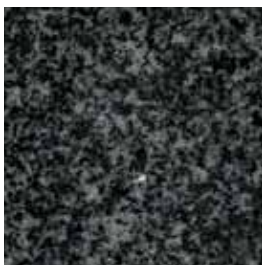
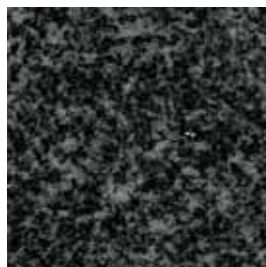
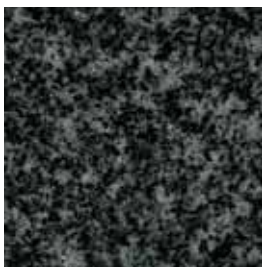
Backsplashes

Countertops

Fireplaces

Tub Surrounds &amp; Showers

Vanities



Impala Black is quarried from a bedrock quarry in Gauteng, South Africa. It comes in two different tonalities: Rustenburg D and Rustenburg M, which is not as dark as the Rustenburg D because of its relative abundance of plagioclase. Arizona Tile focuses its purchases on the darker tone (Rustenburg D) of Impala Black. Both varieties are available in polished slabs of varying thickness and are often used for monumental projects and prestigious buildings. They are also often used for facings and floorings, both exterior and interior. Impala Black can be found in many luxury interiors and furnishings. Because it is such a dense stone, and there are minimal micro fissures and pitting, no resin is applied to the surface. As a natural stone product it is recommended that it be sealed to extend its longevity.



NSF indicates this product conforms to the requirements of NSF/ANSI Standard 51, thereby meeting the health and sanitation requirements for materials used in areas of food preparation.

SIZE	PIECES/BOX	SF/BOX	UNITS/PALLET	SF/PALLET
12"x12"x3/8"	10	10	36 boxes	360

Standard packaging quantities are noted above, but variances may occur.

Please view actual stone when making your selection, as the images on this page are only representative.