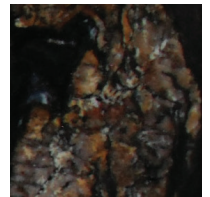
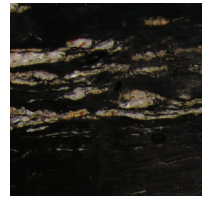
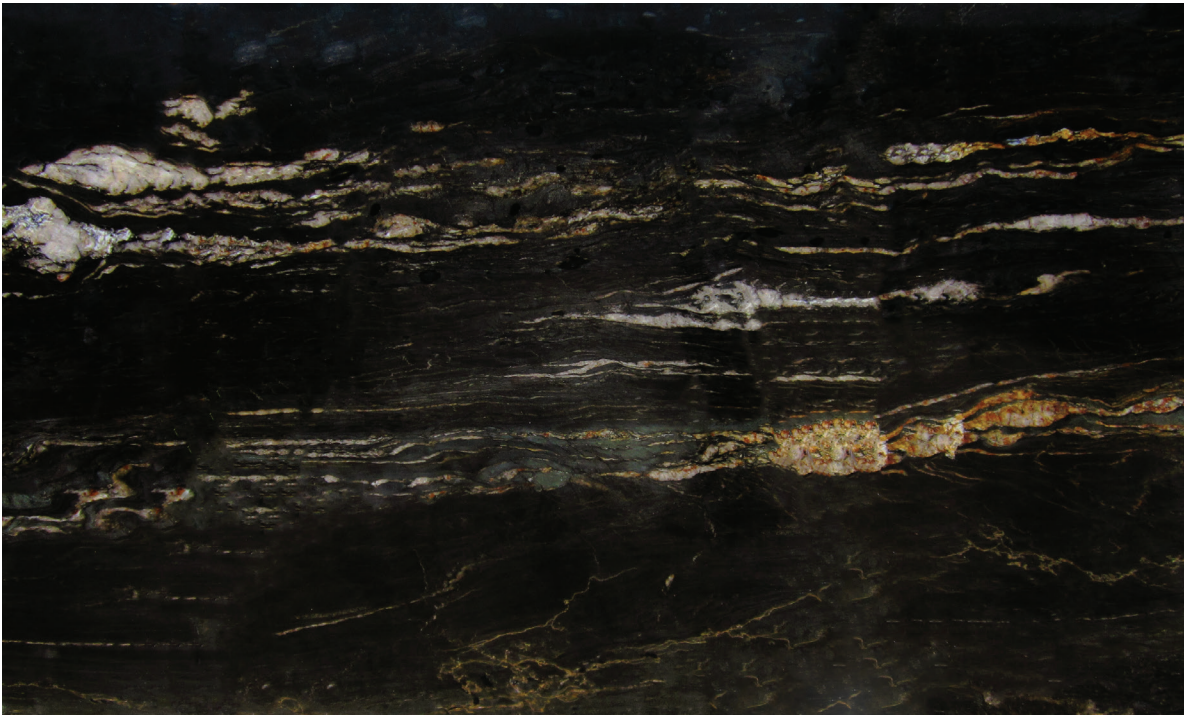


ARIZONA TILE

TITANIUM



PRODUCT TYPE

Granite

ORIGIN

Brazil

STOCKED FINISH

Polished

RECOMMENDED USES

Commercial

Residential

Interior Floor

Countertops

Interior Wall

Fireplaces

Showers

STOCKED SIZES

3/4" (2cm slab)

1-1/4" (3cm slab)

Titanium has a unique composition, consisting of mica, quartzite and biotite. Because this stone has areas of quartz, which are very hard, and other areas of the slab which are softer due to the high concentration of mica, it is normal for the edge detail to have some wave to it after fabrication. Using a beveled or flat edge detail will minimize this wavy look. The softer areas of the stone are more prone to scratching. Arizona Tile only selects Titanium slabs which have gold and white mixed together. This selection is limited, but these slabs have a more dramatic appearance. During the polishing process, an epoxy resin is applied to the surface of the stone to fill in any natural pits, cracks or fissures that may exist. This does not affect the durability, maintenance or beauty of the stone. It is possible for some of the more minute pits that are too small to effectively hold the resin, to reopen during other finishing stages. However, this will not detract from the overall quality or appearance of the stone. Due to the qualities of the stone, the slabs are book-matched; meaning slab one and slab two will be cut and polished to create a mirror image of each other. These are then kept in sequence, which allows for a consistent flow in pattern. Finally, a mesh backing is adhered to the back of the stone to ensure safety while handling and fabricating the slab or tile. As a natural stone product, it is recommended that it be sealed to extend its longevity.