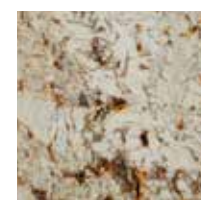


ARIZONA TILE

COPENHAGEN

**STONE TYPE**

Granite

ORIGIN

Brazil

FINISH

Polished

RECOMMENDED USES

Commercial

Residential

Interior Floor

Countertops

Interior Wall

Fireplaces

Showers

STOCKED SIZES

3/4" (2cm slab)

1-1/4" (3cm slab)

Copenhagen is quarried from a bedrock quarry in Brazil. This granite can have a creamy background on one shipment and a whiter background on the next. It will have lots of feldspar and quartz mixed with biotite. During the polishing process, an epoxy resin is applied to the surface of the stone to fill in any natural pits, cracks or fissures that may exist. This does not affect the durability, maintenance or beauty of the stone. It is possible for some of the more minute pits that are too small to effectively hold the resin, to reopen during other finishing stages. However, this will not detract from the overall quality or appearance of the stone. Due to the qualities of the stone, the slabs are book-matched; meaning slab one and slab two will be cut and polished to create a mirror image of each other. These are then kept in sequence, which allows for a consistent flow in pattern. Finally, a mesh backing is adhered to the back of the stone to ensure safety while handling and fabricating the slab or tile. As a natural stone product, it is recommended that this be sealed to extend its longevity.