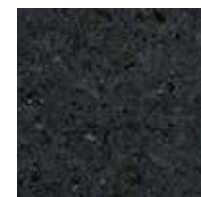


ARIZONA TILE

CAMBRIAN BLACK SATIN

**STONE TYPE**

Granite

ORIGIN

Canada

FINISH

Satin

GEOLOGICAL ERACambrian
(488-542 million years ago)**SIZES**3/4" (2cm slab)
1-1/4" (3cm slab)**RECOMMENDED USES**Commercial & Residential
Interior & Exterior
Floor & Wall
Backsplashes
Countertops
Fireplaces
Tub Surrounds & Showers
Vanities

Cambrian Black Satin is quarried from a bedrock quarry in Canada. The quarry is located on the largest shelf of granite in North America near Quebec, Canada. The quarry has the ability to produce a huge amount of material with a consistent grain structure, making this granite perfect for large projects as well as for kitchen countertops. The Satin finish brings out more depth in this stone and provides a unique texture. During the brushing process, an epoxy resin is applied to the surface of the slab to fill in any natural pits, cracks or fissures that may exist in the slab. This does not affect the durability, maintenance or beauty of the stone. It is possible for some of the more minute pits that are too small to effectively hold the resin, to reopen during other finishing stages. However, this will not detract from the overall quality or appearance of the stone. There will be noticeable variations in color and movement between pieces. Therefore, it is important and recommended that a range of this product be viewed before finalizing a purchase. As a natural stone product, it is recommended that it be sealed to extend its longevity.